

STATE OF ARKANSAS
STATE HIGHWAY COMMISSION

PLAN YEAR	JOB NO.	SHEET NO.	TOTAL SHEETS
1930	4155	1	6

FED. DIST. NO.	STATE	FED. AID PROJ. NO.	FISCAL YEAR	SHEET NO.	TOTAL SHEETS
6	ARK.				

INDEX OF SHEETS

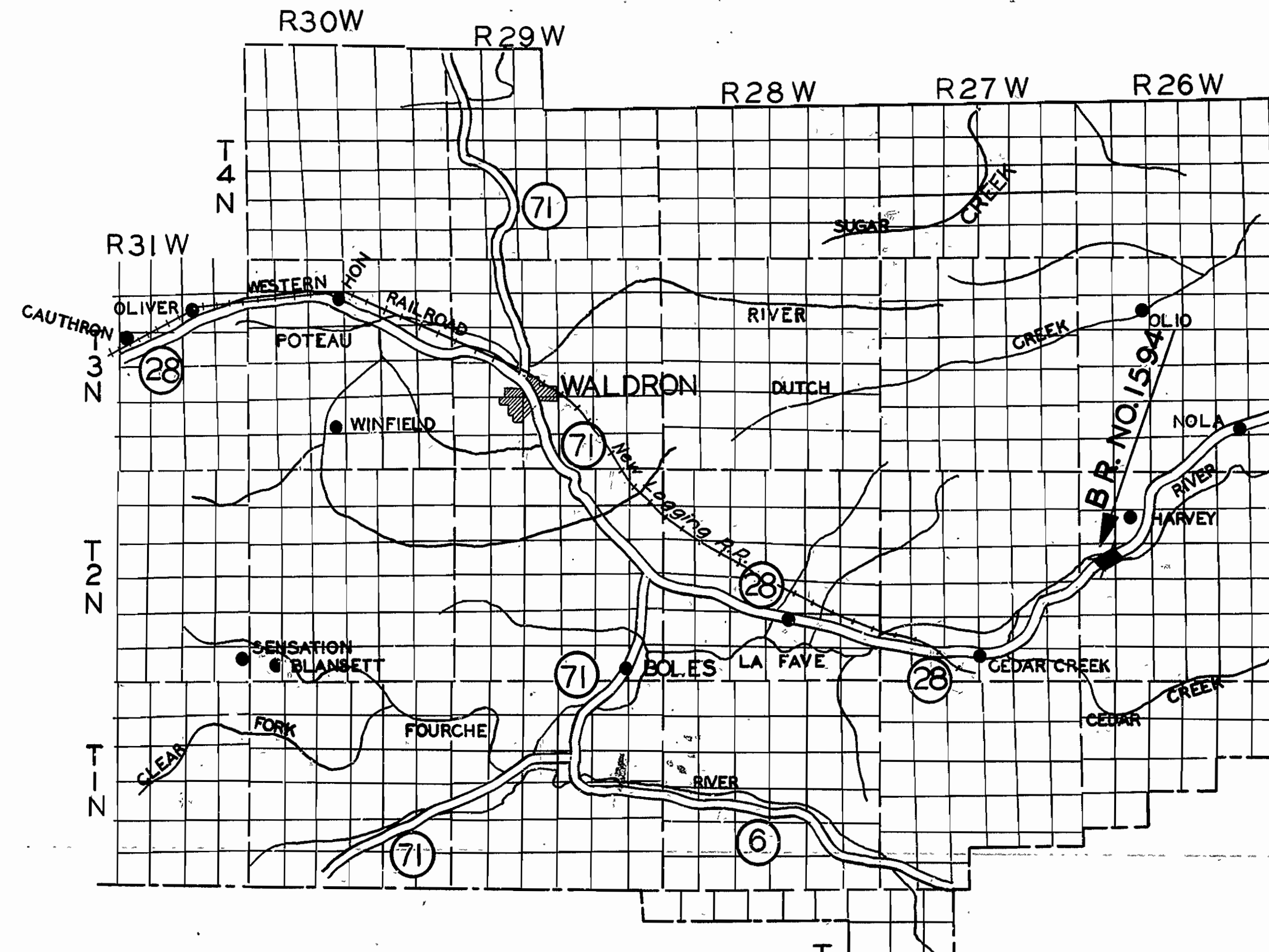
Sheet	Drawg No.	Title
1	2890	Title Sheet
2	2891	Layout of Br. 1594
3	2892	Details of Piers
4	2893	Details of Abutments
5	2393	Details of 90'-0" Truss Span
6	2397	" " 110'-0" " "

QUANTITIES

S.P. & Item No. 12	Common Excavation	925	Cu. Yds.
" "	13 Dry Excavation for Structures	452	" "
" "	13 Wet " " "	262	" "
" "	13 Rock " " "	350	" "
" "	54 Class "A" Concrete	577.36	" "
" "	54 " " " " "	274.39	" "
" "	55 Reinforcing Steel	107,945	Lbs.
" "	56 Structural Steel (Trusses)	389,170	" "
" "	74 Concrete Railing for Structures	14	Lin. Ft.

PLAN OF PROPOSED BRIDGE
OVER
FOURCHE RIVER
SCOTT COUNTY

ROUTE 28 SEC. 2
JOB NO 4155



LAYOUTS

LENGTH OF PROJECT = 562'-11" 0.06 MI.
LENGTH OF BRIDGES = 522'-11"
LENGTH OF EMBANKMENT = 40'-0"

Specifications approved by Chief, Bureau of Public Roads, September 28, 1925, and adopted by State Highway Commission May 30, 1925 with revisions and Special Provisions as follows:

REVISIONS		
Pamphlet	A Revised Sept. 1st, 1928	Approved June 1st, 1929
"	B Revised JUL 1 1930	
"	C " JUL 1 1930	
"	D Revised July 1st, 1928	Approved Nov. 24th, 1928
"	E Revised Jan. 1st, 1930	
"	F Revised Aug. 1st, 1929	
"	G Revised June 1st, 1929	
"	H Revised Jan. 1st, 1930	
"	I " MAY 30 1925	
"	J Revised Jan. 1st, 1929	Approved June 1st, 1929
"	K " MAY 30 1925	
"	L Revised Jan. 1st, 1929	Approved June 1st, 1929

SPECIAL PROVISIONS		
Item		No. of Sheets
	Field Engineers Office	1
	Common Excavation	3

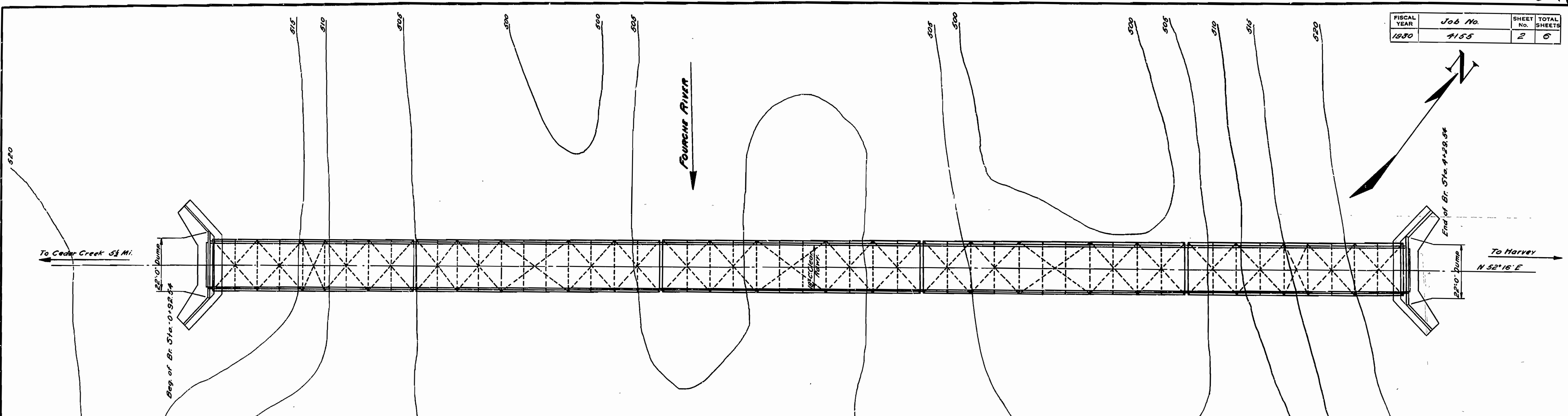
APPROVED
CHIEF ENGINEER - U. S. BUREAU OF PUBLIC ROADS
APPROVED
DISTRICT ENGINEER - U. S. BUREAU OF PUBLIC ROADS
APPROVED
CHIEF - S. BUREAU OF PUBLIC ROADS
APPROVED
CHAIRMAN - STATE HIGHWAY COMMISSION
APPROVED
STATE HIGHWAY ENGINEER

N. B. Sawyer
BRIDGE ENGINEER

BRIDGES NO. 1594

DRAWING No. 2890

FISCAL YEAR	Job No.	SHEET NO.	TOTAL SHEETS
1930	4155	2	6



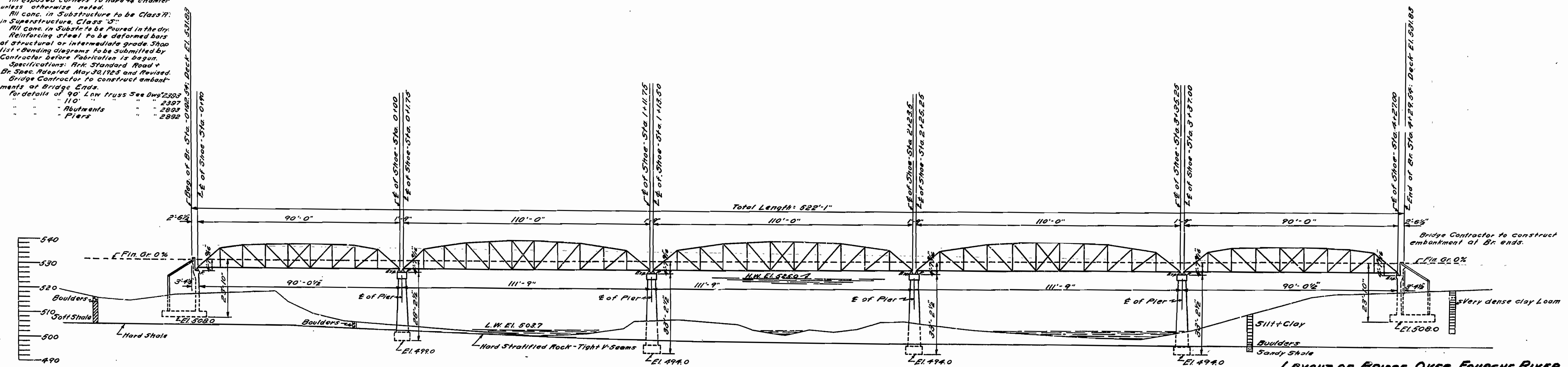
PLAN

QUANTITIES:

Item No. SP412	Com. Excavation	925 Cu Yds.
13	Dry	452
13	Wet	262
13	Rock	350
54	Class "B" Conc.	577.95
54	Class "C" Conc.	274.59
55	Reinforcing Steel	101865 LBS.
56	Structural	388.170
74	Conc. Rolling	14 Lin. Ft.

GENERAL NOTES:

All exposed corners to have 4/8 chamfer unless otherwise noted.
 All conc. in Substructure to be Class "A" in Superstructure, Class "B".
 All conc. in Substr. to be poured in the dry. Reinforcing steel to be deformed bars of structural or intermediate grade. Shop list & bending diagrams to be submitted by Contractor before fabrication is begun.
 Specifications: Ark. Standard Road & Br. Spec. Revised May 30, 1925 and Revised Bridge Contractor to construct embankments at Bridge Ends.
 For details of 90' Low Truss See Dwg. 2283:
 110 " 2397
 - Abutments " 2892
 - Piers " 2892



ELEVATION

Drainage Area - 380 Sq. Mi. - Mountainous
 B.M. on 10' Elm 40' Lt. Sta. 4+140 - El. 523.21

LAYOUT OF BRIDGE OVER FOURCHE RIVER
 NEAR HARVEY ARK.
 SCOTT CO.
 ROUTE 28 SEC. 2

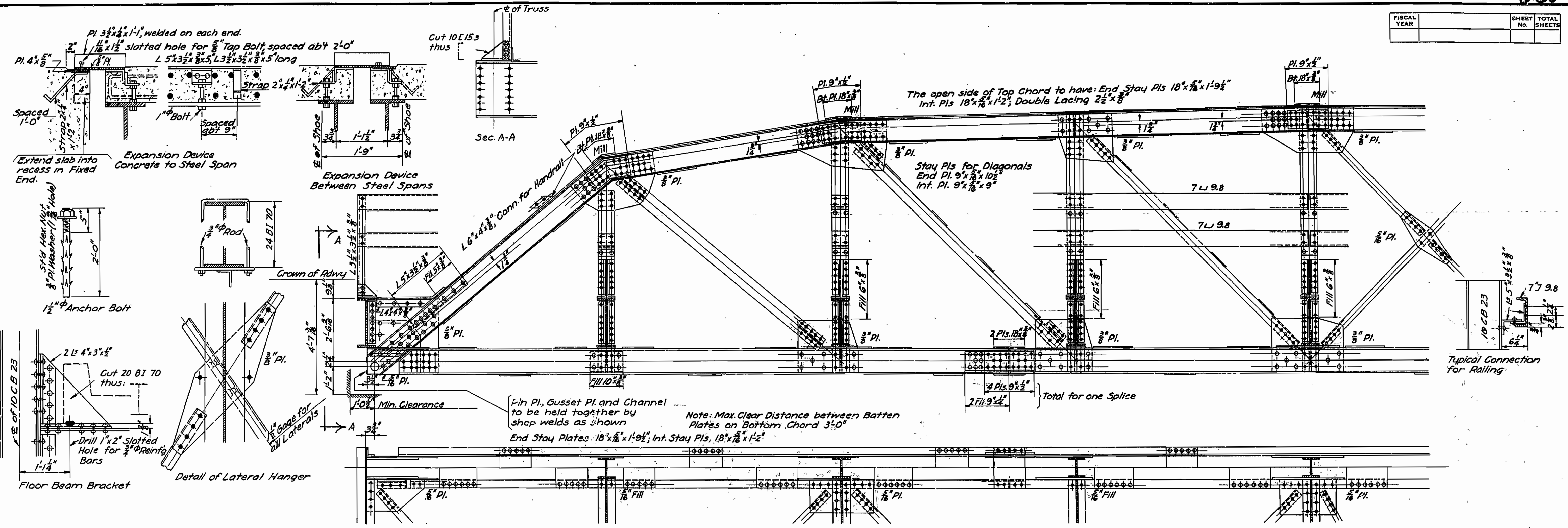
ARKANSAS STATE HIGHWAY COMMISSION
 LITTLE ROCK, ARK.

Drawn By: Date: 2-2-29
 Traced By: H.M.M. Date: 2-11-29
 Checked By: Date:
 BRIDGE NO. 1594 DRAWING NO. 2891

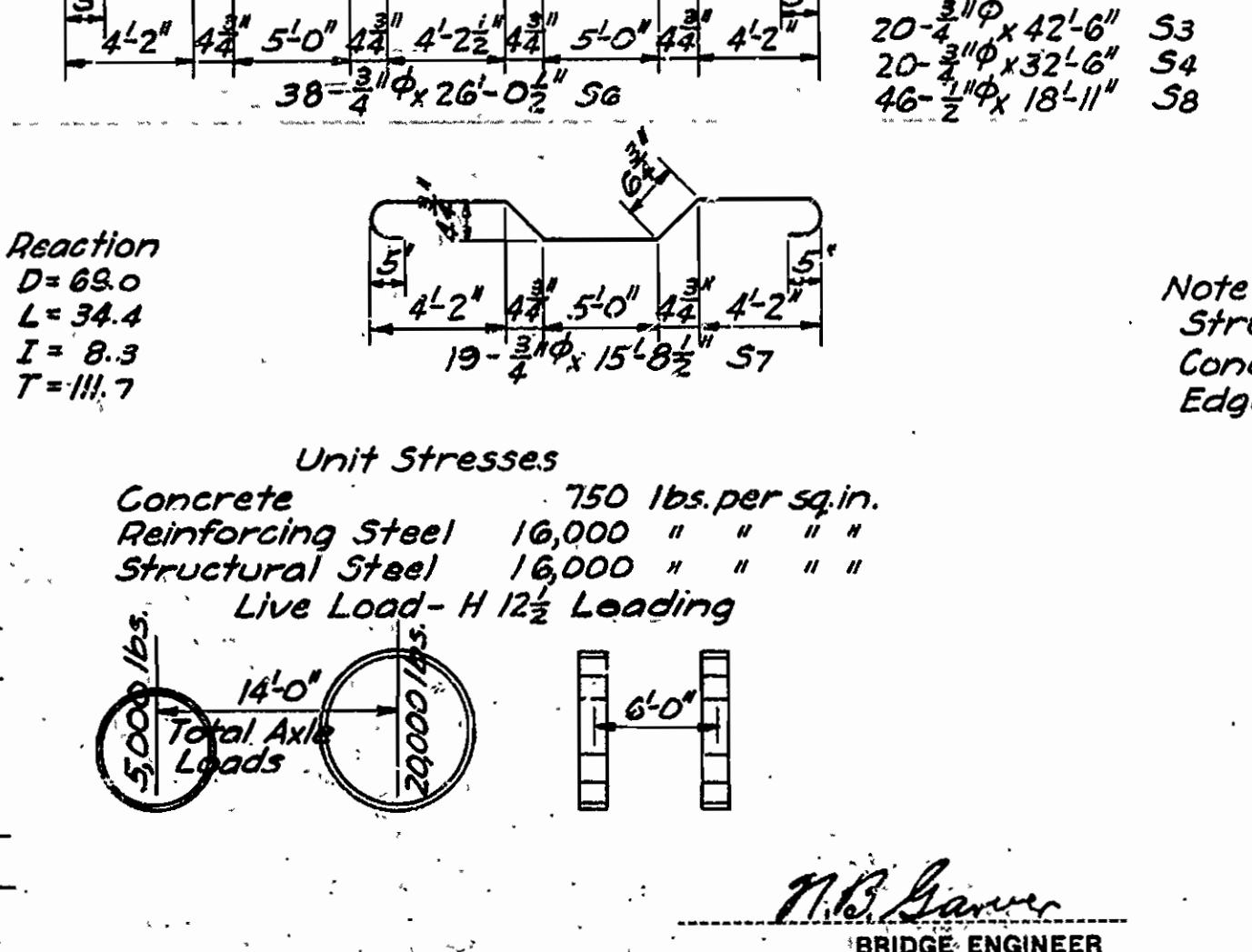
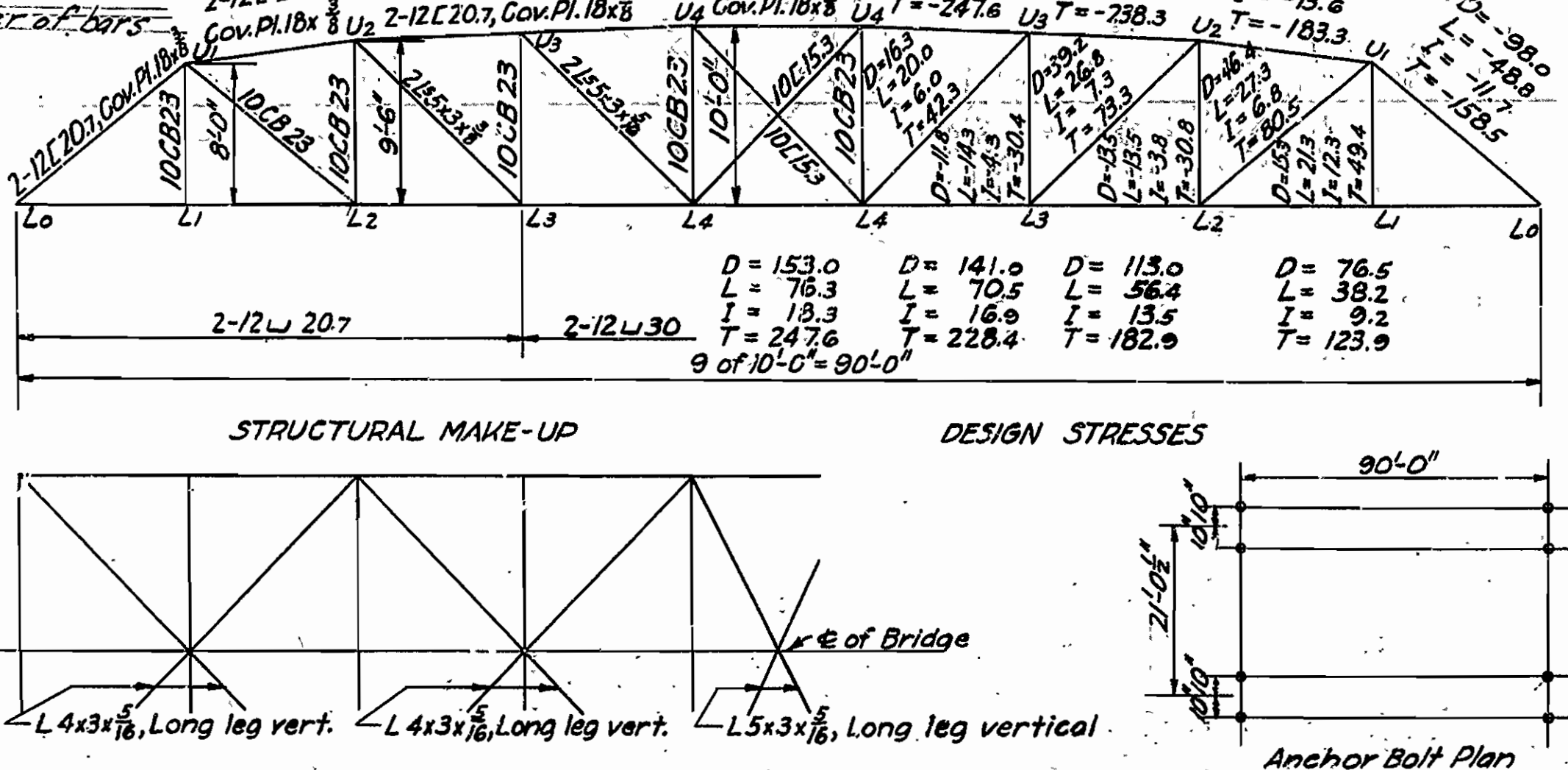
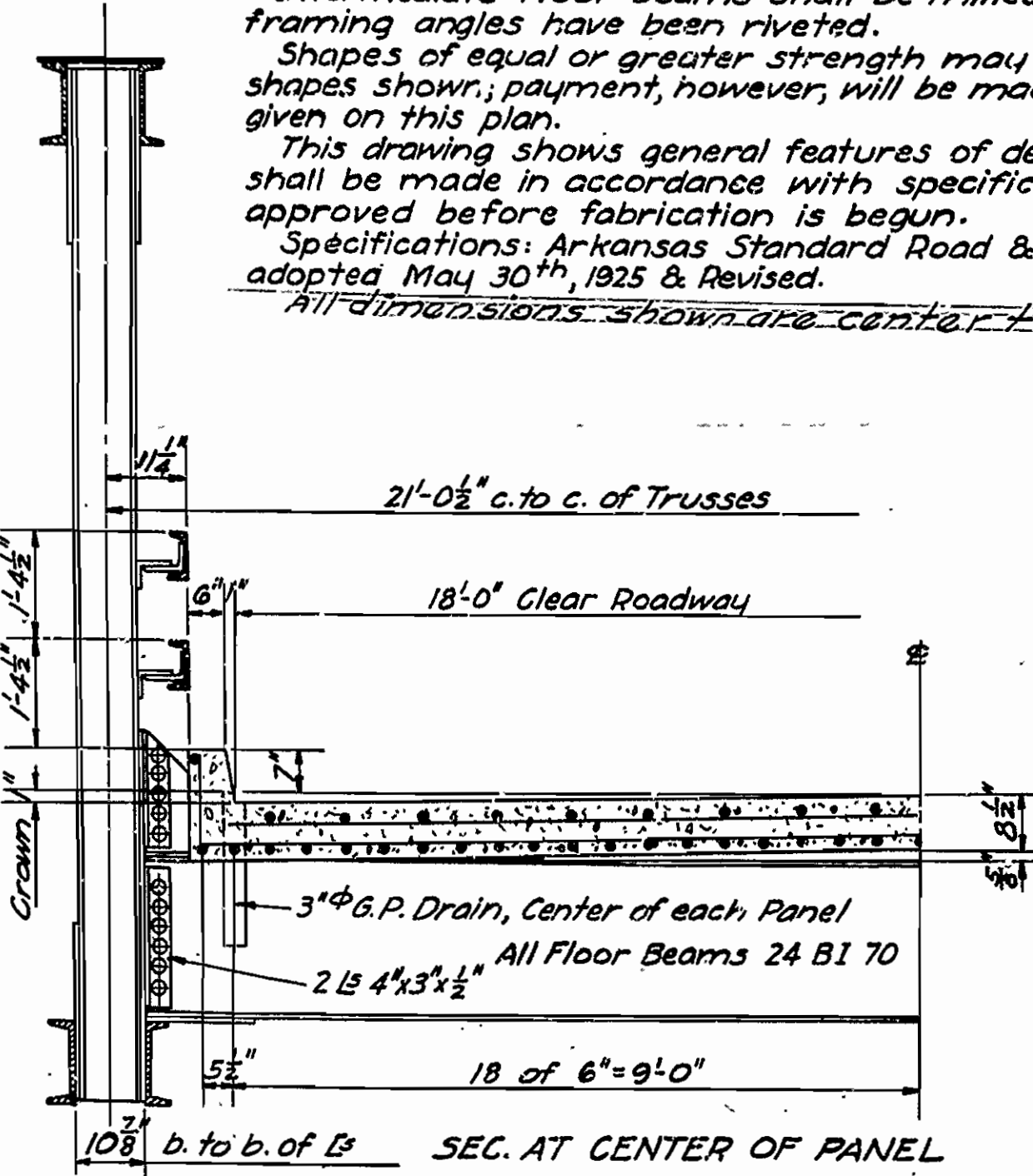
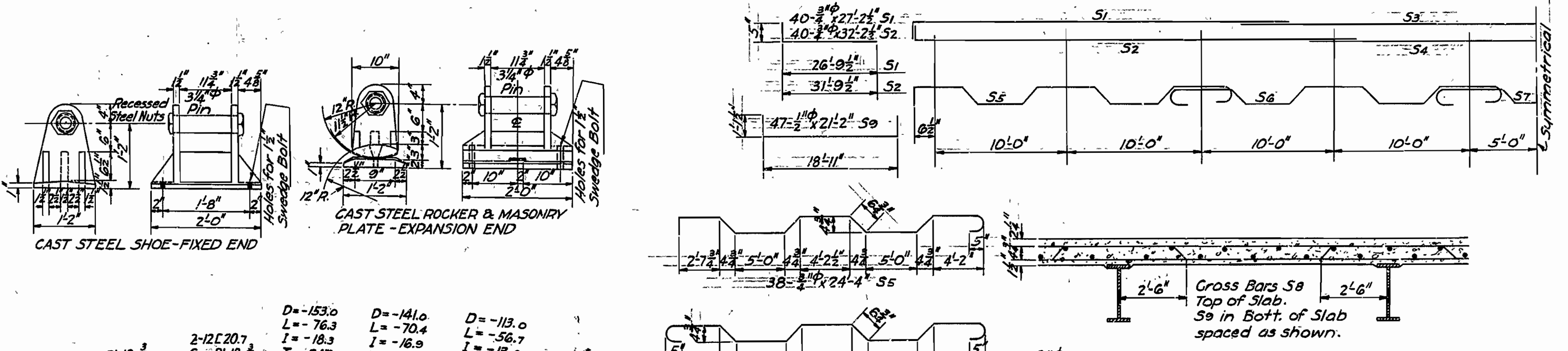
N.B. Harvey
 BRIDGE ENGINEER

Scale: 1/4" = 20'

FISCAL YEAR	SHEET No.	TOTAL SHEETS



Notes
 Rivets 3/4"; open holes 1 1/8"
 All holes in truss connections to be sub-punched 3/8" and reamed to size while truss is assembled; this applies to field as well as shop rivets.
 Floor beam connections to be sub-punched 3/8" and reamed to size through a metal template.
 All field connections shall be riveted.
 Shop paint: After being completely assembled and shop work finished, all pieces shall be given one coat of red lead and raw linseed oil before shipment.
 Field paint: Apply two coats of different colors as specified by the engineer.
 Floor slab: Concrete to be Class "S". One inch has been added for wear. Intermediate floor beams shall be milled to exact length after framing angles have been riveted.
 Shapes of equal or greater strength may be substituted for structural shapes shown; payment, however, will be made in accordance with sizes given on this plan.
 This drawing shows general features of design only. Shop drawings shall be made in accordance with specifications, submitted and approved before fabrication is begun.
 Specifications: Arkansas Standard Road & Bridge Specifications, adopted May 30th, 1925 & Revised.
 All dimensions shown are center to center of bars.

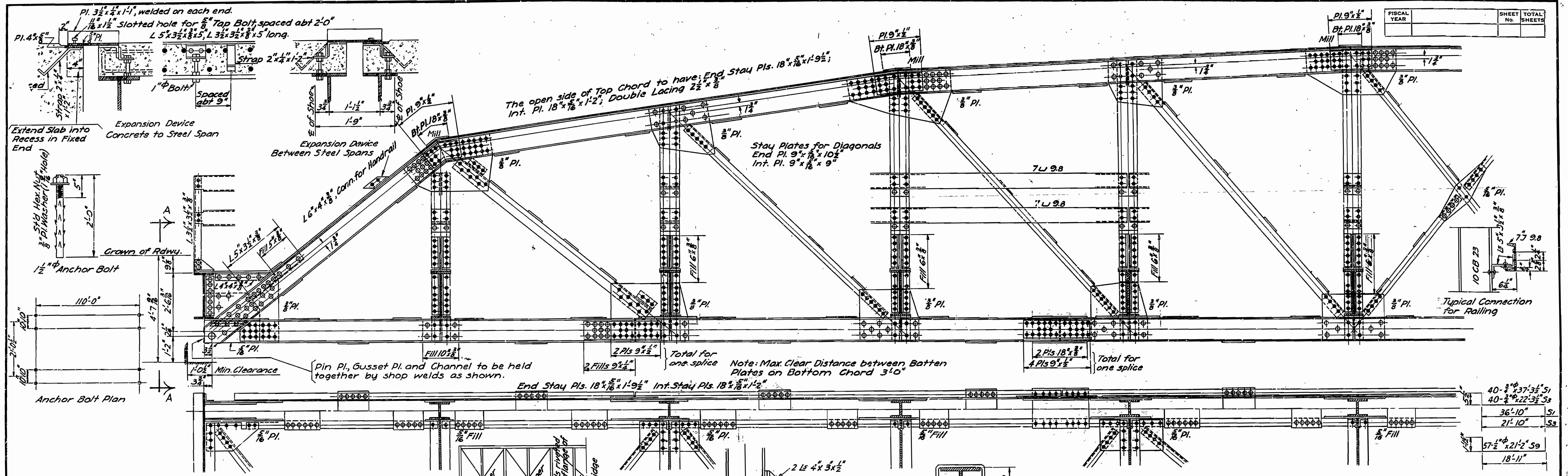


ESTIMATED QUANTITIES
 Structural Steel 64,400 Lbs.
 Cast Steel 1,670 Lbs.
 Reinforcing Steel 10,760
 Class "S" Concrete 48.4 Cu. Yds.
 Note: Weight of Expansion Devices not included in Structural Steel Tonnage.
 Concrete and Reinforcing Steel are Estimated from Edge to Edge of End Floor Beams.

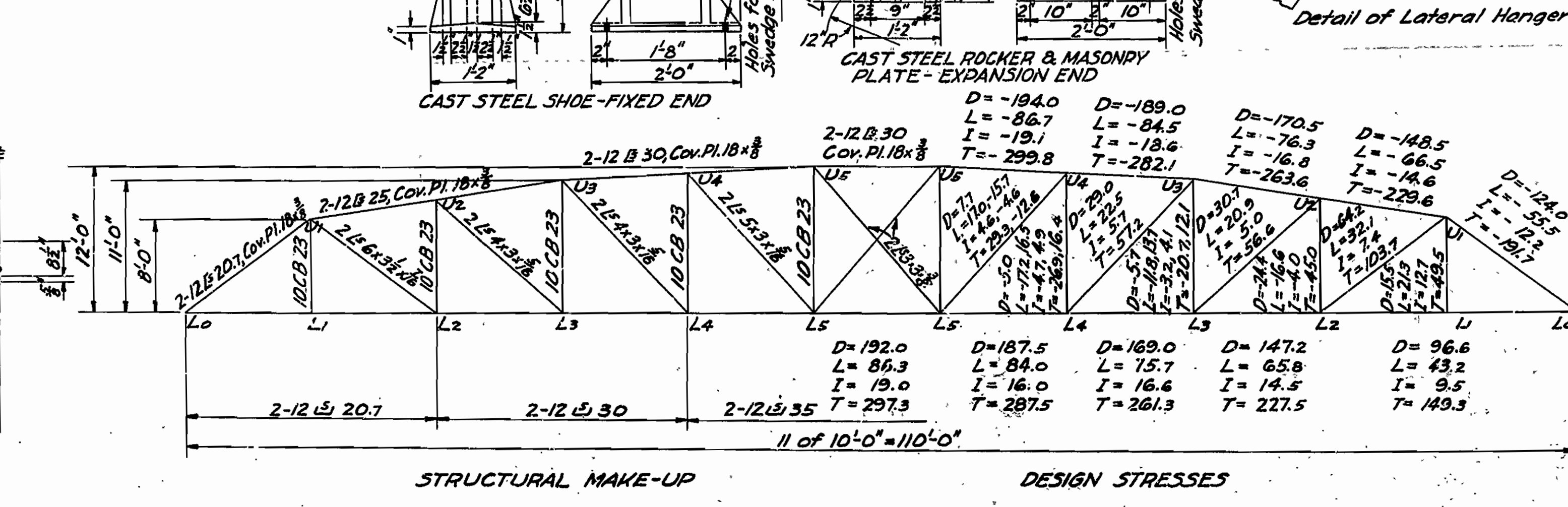
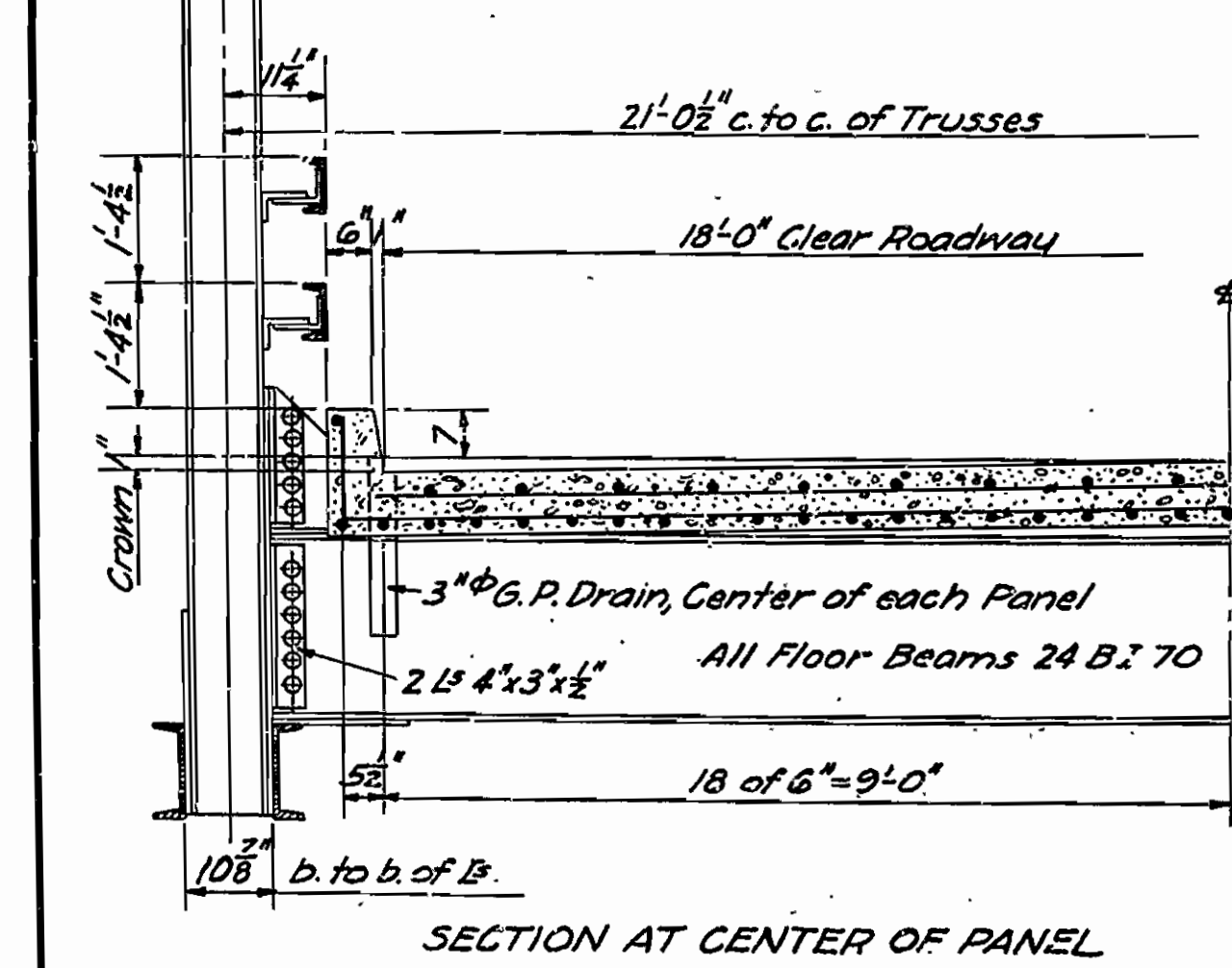
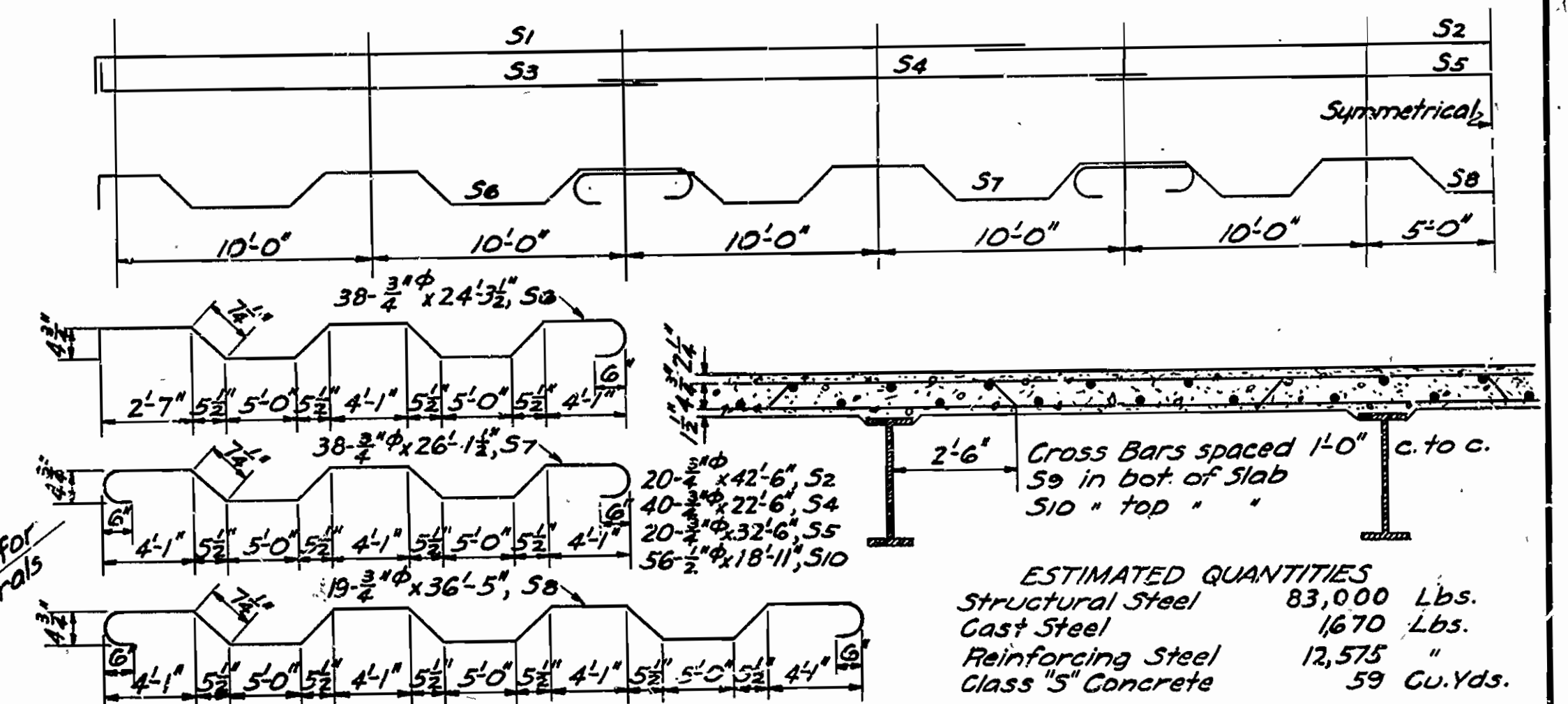
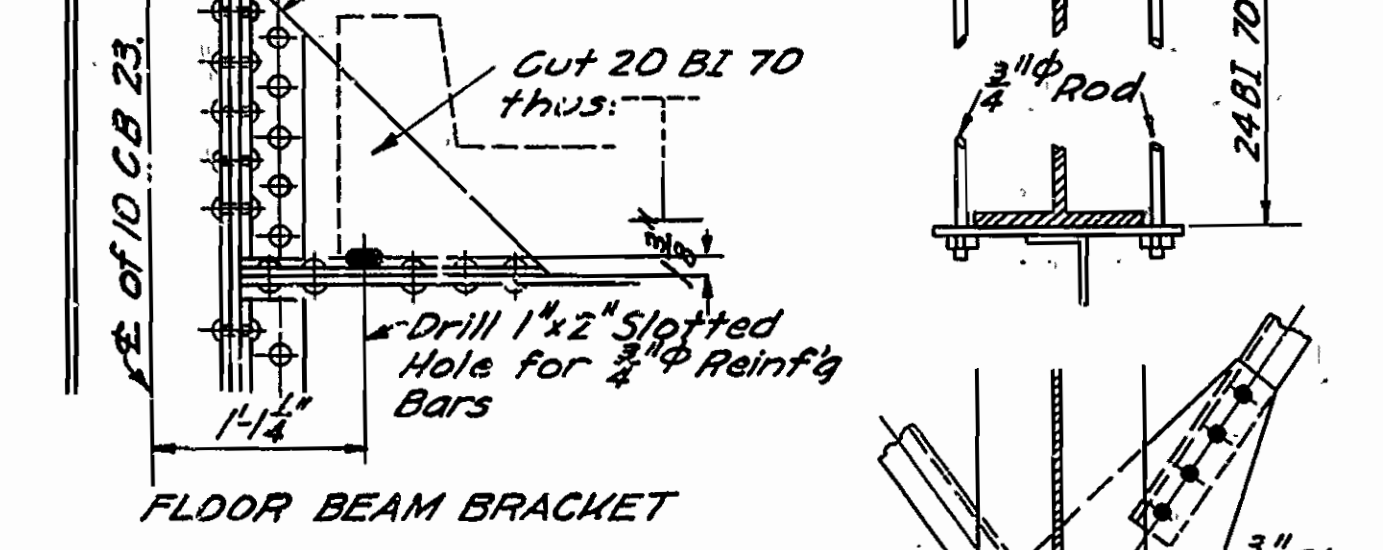
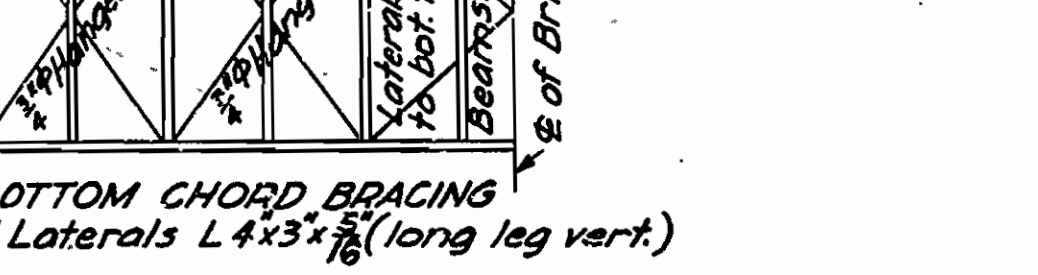
STANDARD PLAN
90'-0" LOW TRUSS SPAN
18'-0" CLEAR ROADWAY

ARKANSAS STATE HIGHWAY COMMISSION
 LITTLE ROCK, ARK.
 Drawn By: A Date: 8-8-30
 Traced By: J Date: 9-11-30
 Checked By: Date:
 BRIDGE NO. [] DRAWING NO. 2303

FISCAL YEAR	SHEET NO.	TOTAL SHEETS



Notes:
 Rivets 3/4"; open holes 1 1/8"
 All holes in truss connections to be sub-punched 3/16" and reamed to size while truss is assembled; this applies to field as well as shop rivets.
 Floor beam connections to be sub-punched 3/16" and reamed to a metal template.
 All field connections shall be riveted.
 Shop paint: After being completely assembled and shop work finished, all pieces shall be given one coat of red lead and raw linseed oil before shipment.
 Field paint: Apply two coats of different colors as specified by the engineer.
 Floor slab: Concrete to be Class "S". One inch has been added for wear.
 All floor beams to be milled to exact length after framing angles have been riveted.
 Shapes of equal or greater strength may be substituted for structural shapes shown, but payment will be made in accordance with sizes given on this plan.
 This drawing shows general features of design only.
 Shop drawings shall be made in compliance with specifications, submitted and approved before fabrication is begun.
 Specifications: Arkansas Standard Road & Bridge Specifications, adopted May 30th, 1925 & Revised.
 All dimensions shown are center to center of bars.



STANDARD PLAN
 110'-0" LOW TRUSS SPAN
 18'-0" CLEAR ROADWAY

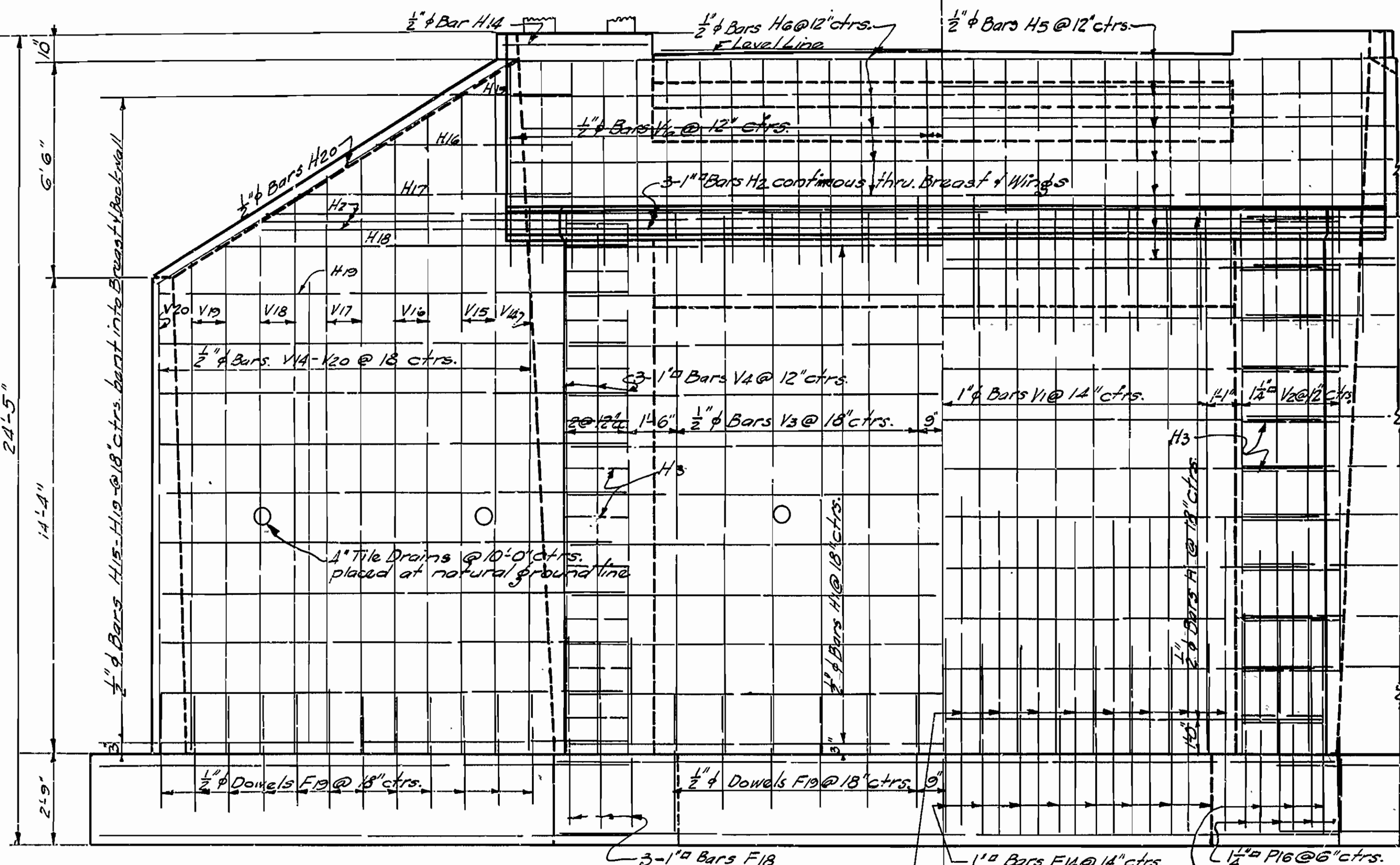
ARKANSAS STATE HIGHWAY COMMISSION
 LITTLE ROCK, ARK.

Drawn By: A Date: 7-2-30
 Traced By: G Date: 7-6-30
 Checked By: Date:

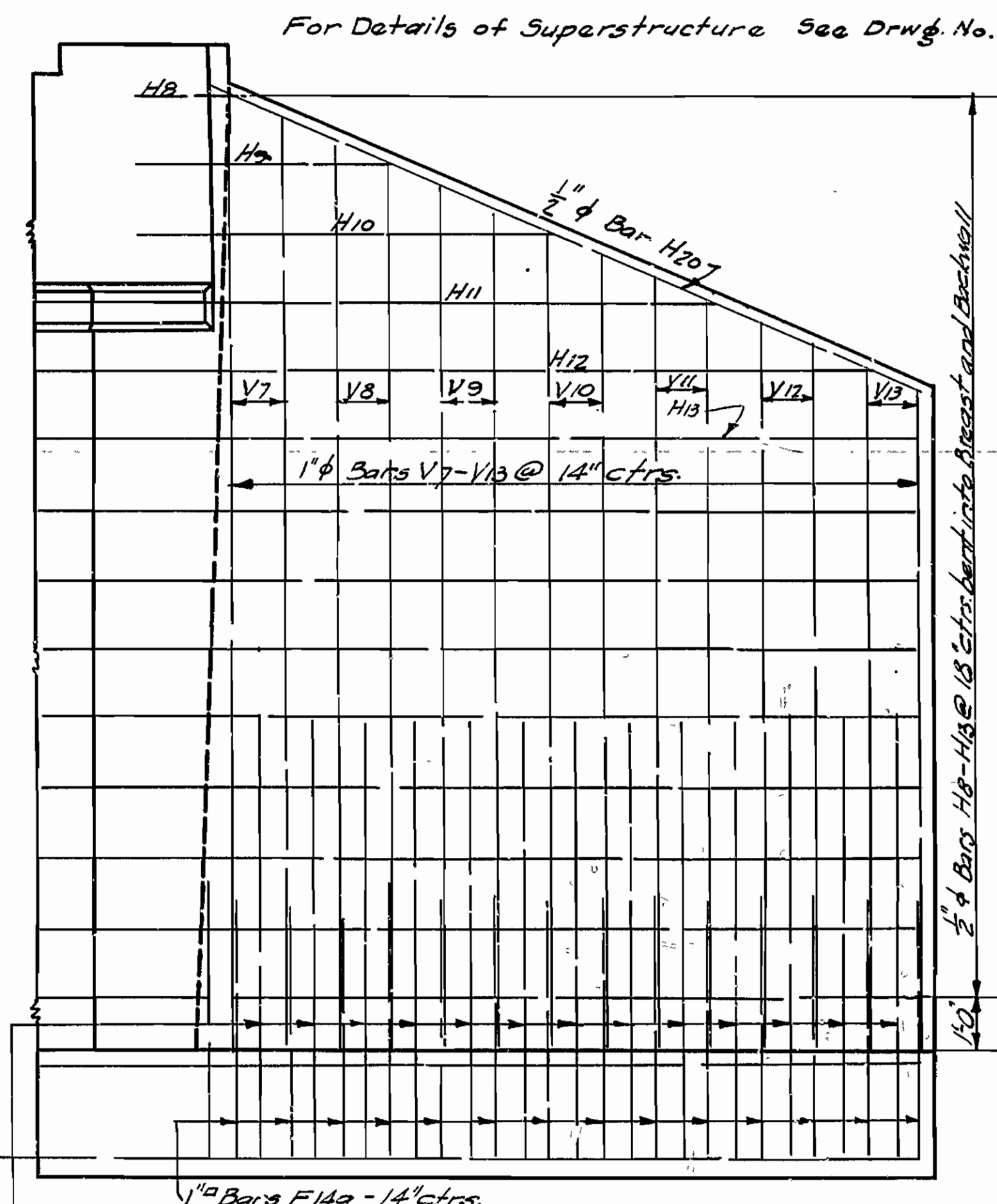
Scale: 1/2" = 1'-0"

BRIDGE NO. DRAWING NO. 2397

W. B. Sawyer
 BRIDGE ENGINEER

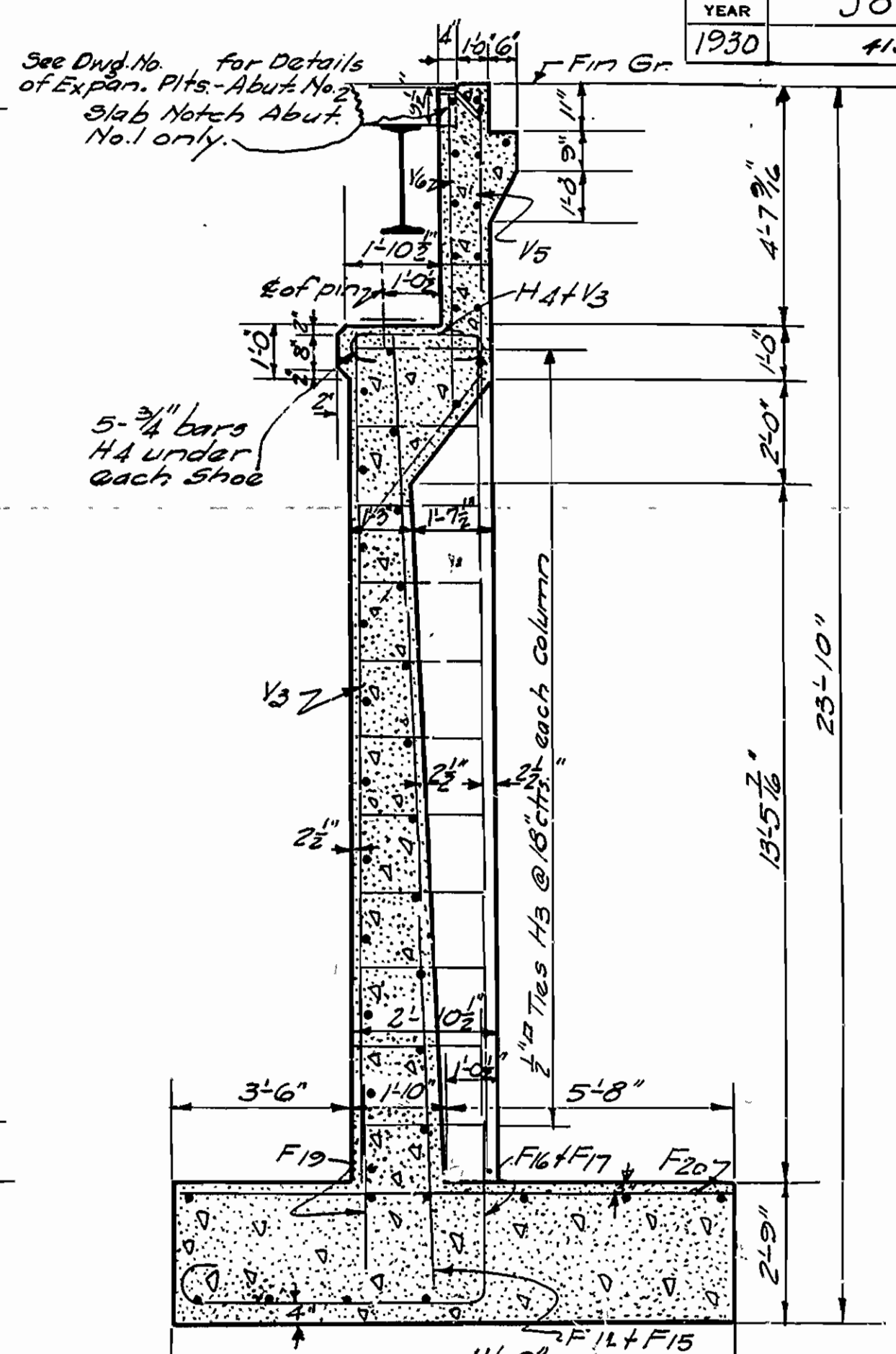


HALF ELEVATION
Showing Front Face Steel

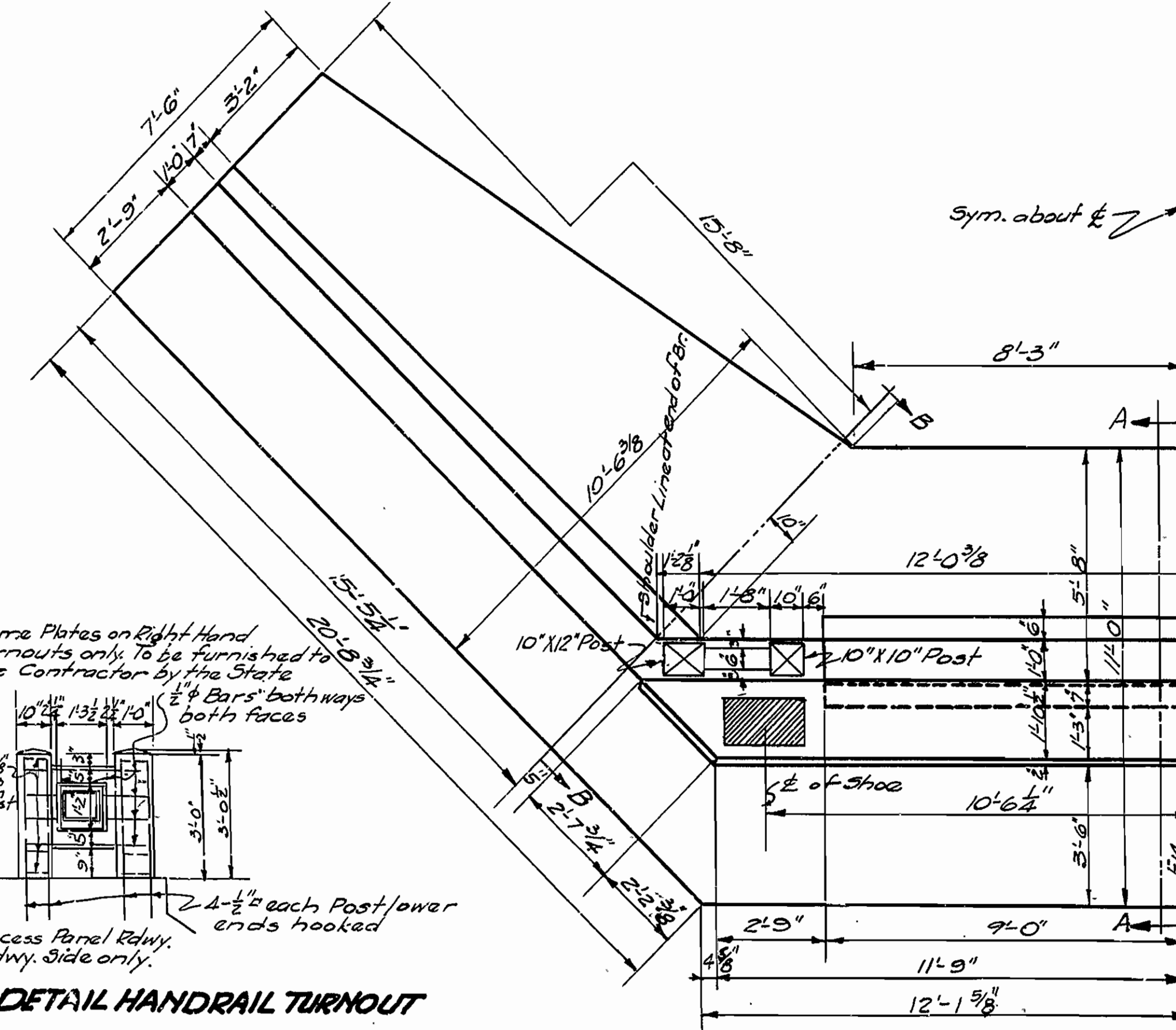


ELEV. OF WING
Showing Back Face Steel

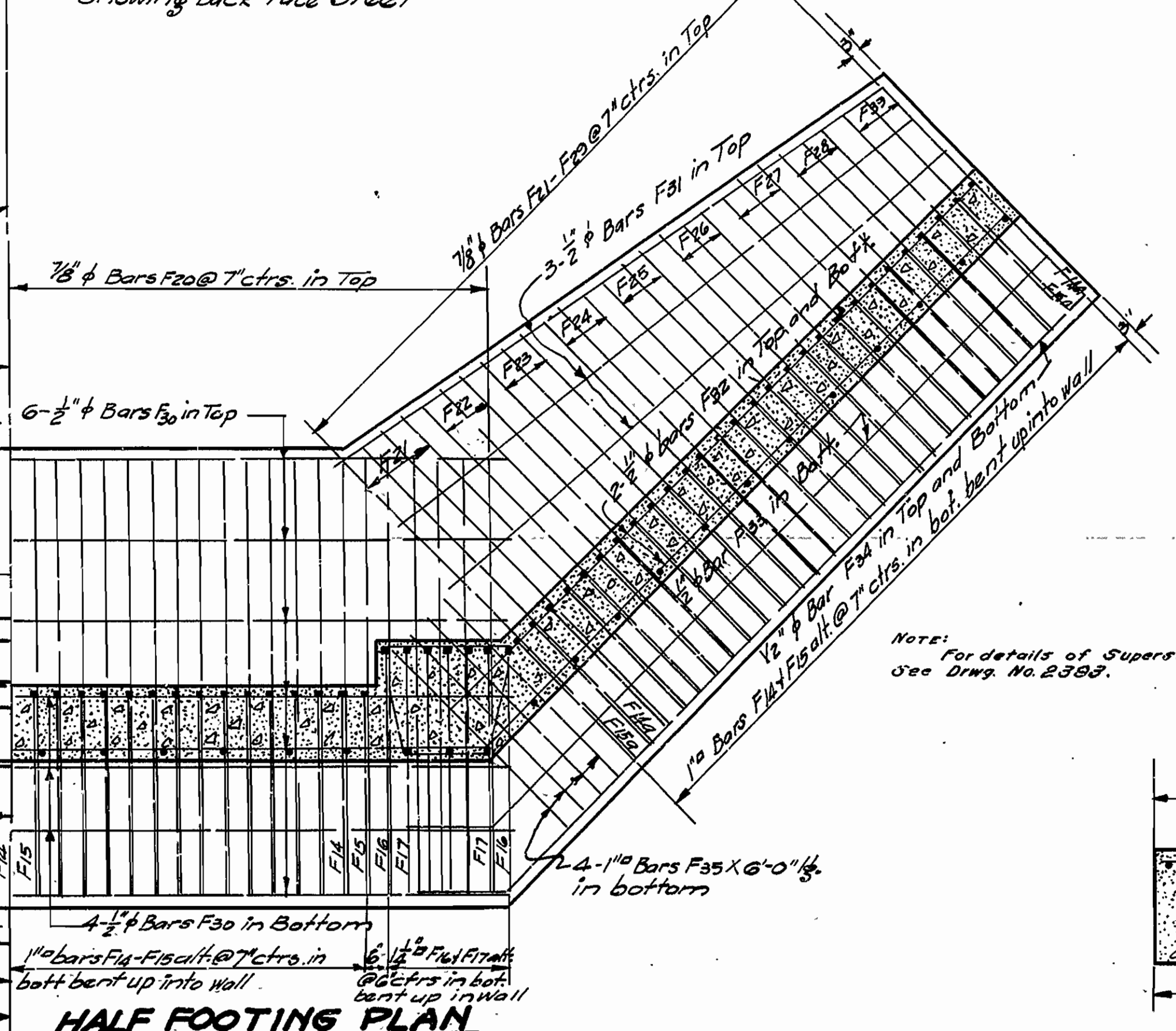
HALF ELEV. OF BREAST
Showing Back Face Steel



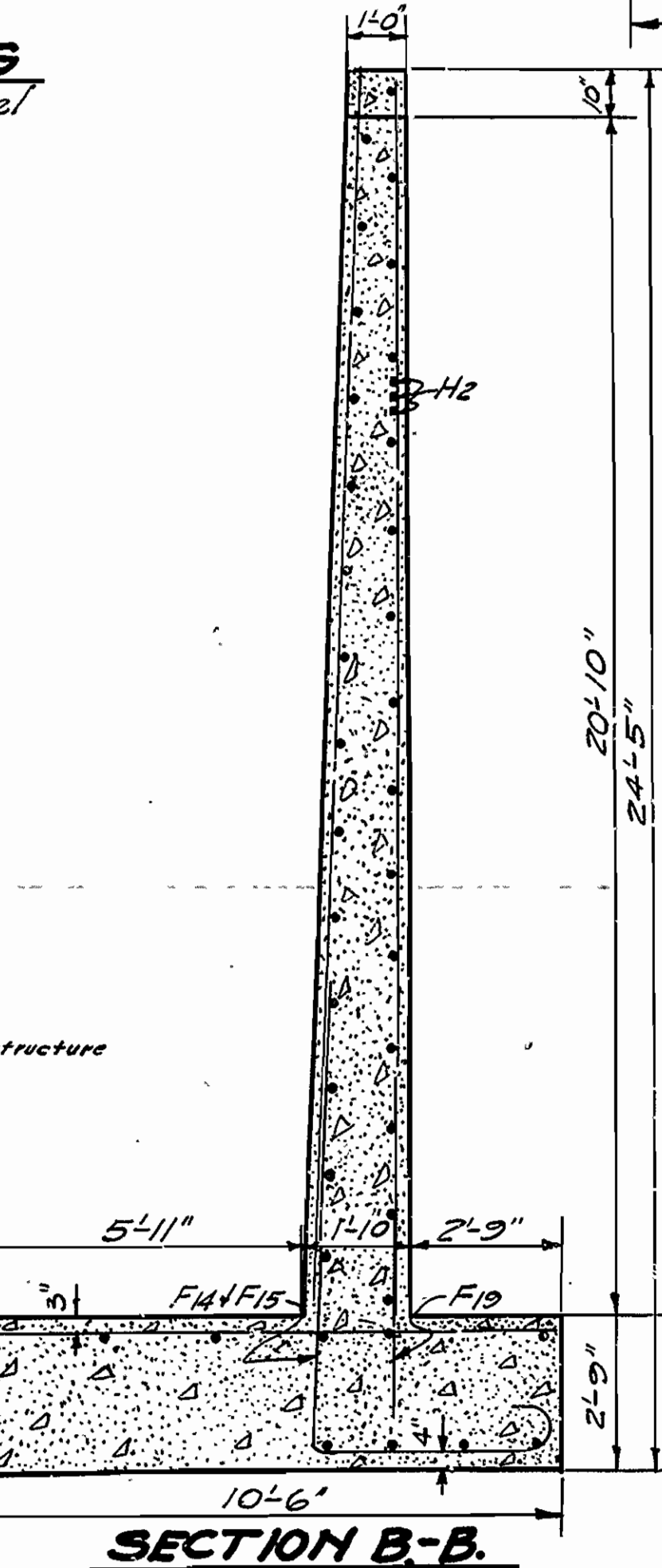
SECTION AA.



HALF PLAN



HALF FOOTING PLAN
Showing Reinforcement Steel



SECTION B-B.

Mark	Size	Length	Bending Diagram		
			A	B	C
F14	1"0	11'5"	4'11"	5'9"	2'2"
F15	1"0	15'11"	4'11"	9'6"	4'2"
F14a	1"0	10'6"	4'0"	5'9"	2'3/4"
F15a	1"0	14'2"	4'0"	9'5"	4'2"
F16	1"0	13'3"	5'2"	6'7"	-
F17	1"0	15'7"	5'2"	8'5"	-
F18	1"0	6'9"	5'9"	8"	-
H4	3/4"	3'11"	2'5"	6"	6"
H2	1"0	50'0"	23'6"	13'3"	9'4 1/2"
F33	1/2"	21'4"	19'4"	2'0"	1'5"
F34	"	22'3"	20'3"	2'0"	1'5"
H8	"	3'0"	1'0"	2'0"	1'5"
H9	"	5'9"	3'9"	2'0"	1'5"
H10	"	9'4"	7'4"	2'0"	1'5"
H11	"	15'0"	11'0"	2'0"	1'5"
H12	"	16'6"	14'6"	2'0"	1'5"
H13	"	18'0"	16'0"	2'0"	1'5"
H15	"	4'3"	2'3"	2'0"	1'5"
H16	"	8'0"	6'0"	2'0"	1'5"
H17	"	11'6"	9'6"	2'0"	1'5"
H18	"	17'9"	15'9"	2'0"	1'5"
H19	"	20'0"	18'0"	2'0"	1'5"
V5	1/2"	9'11"	5'4"	3'9"	2'4"
H3	1/2"	11'4"	-	-	-
V3	1/2"	10'5"	-	-	-

**DETAILS OF ABUTMENTS
FOR BRIDGE OVER FOURCHE RIVER
NEAR HARVEY ARK
SCOTT COUNTY
ROUTE 28 SEC 2**

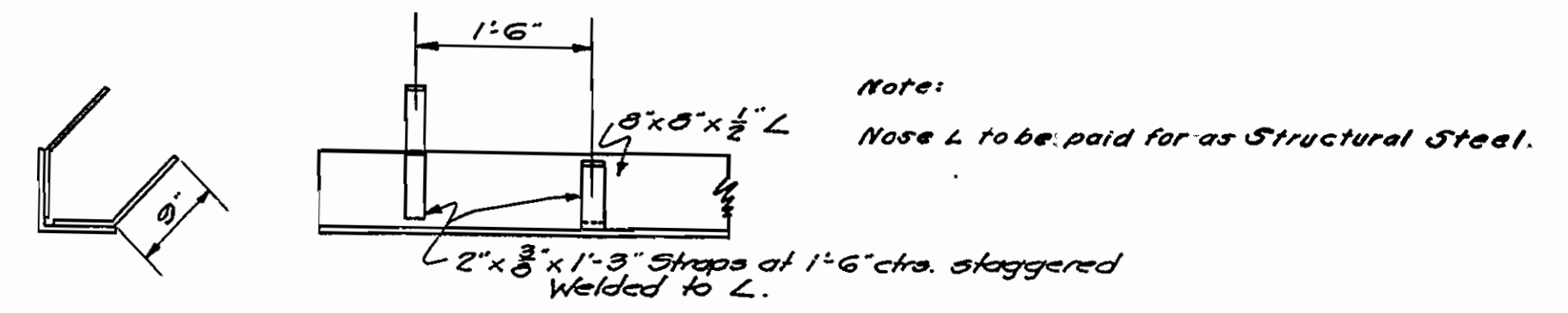
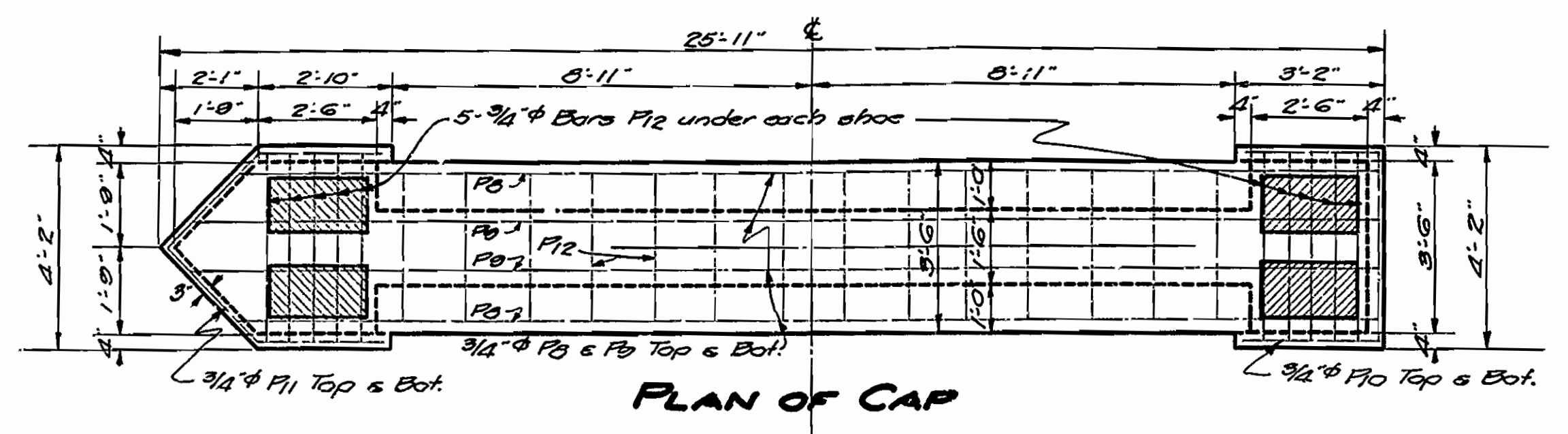
ARKANSAS STATE HIGHWAY COMMISSION
LITTLE ROCK, ARK.

Drawn By: *Boyer* Date: 7-2-30
Traced By: *M.K.W.* Date: 7-12-30
Checked By: _____ Date: _____
Scale: 3/8" = 1'-0"
BRIDGE NO. 1594 DRAWING NO. 2893

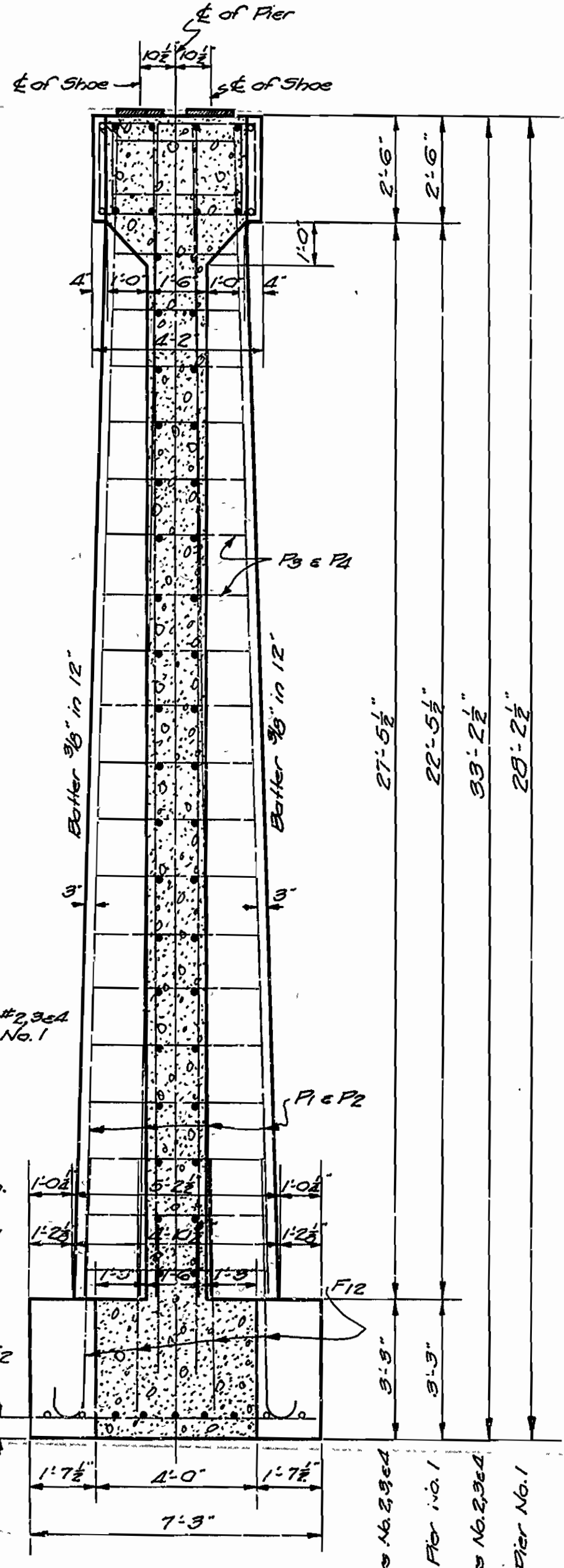
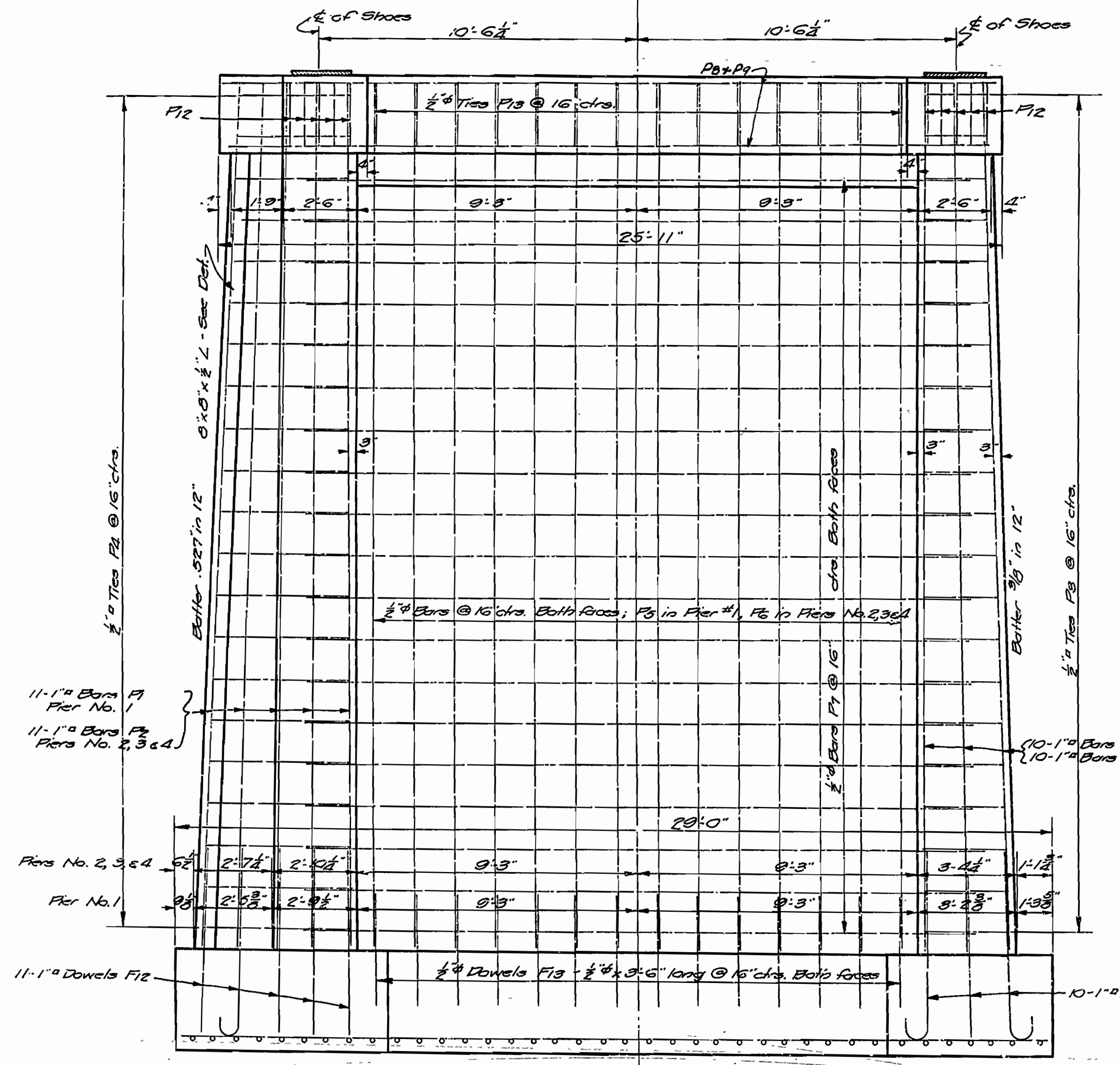
M.B. Boyer
BRIDGE ENGINEER

Note: For details of Superstructure see Drwg. No. 2393.

FISCAL YEAR	Job No.	SHEET NO.	TOTAL SHEETS
1930	4155	3	6

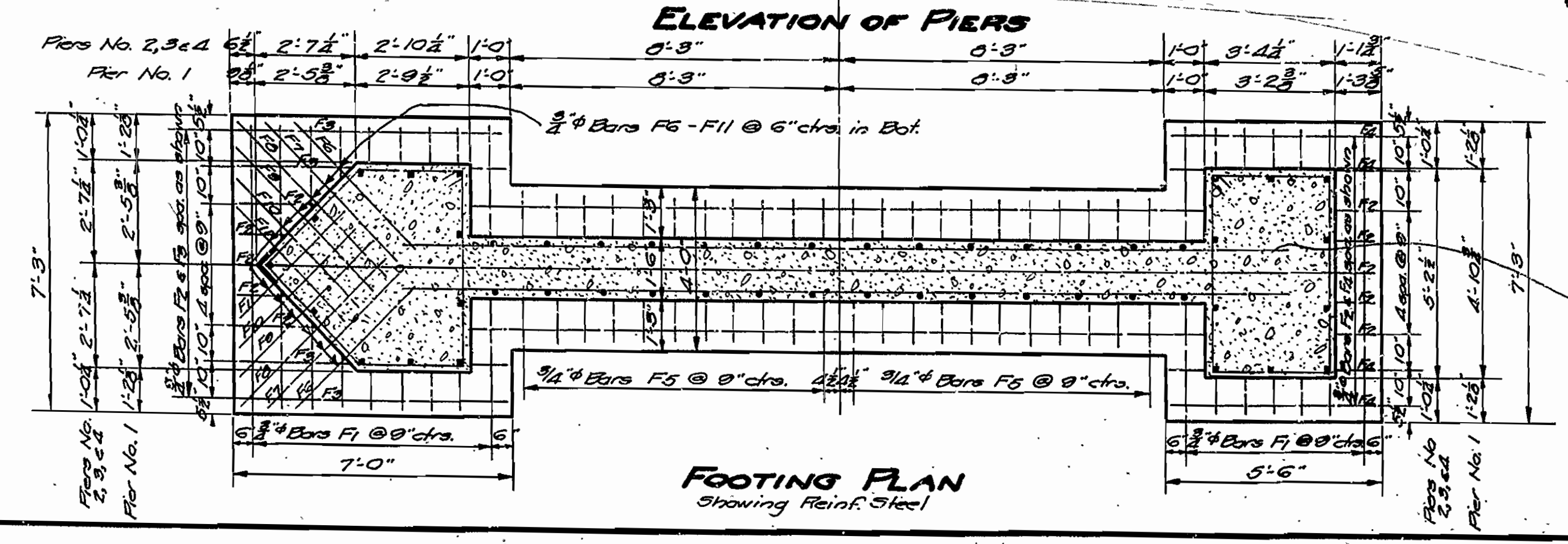


DETAIL OF PIER NOSE L
Scale 3/4" = 1'-0"



SECTION ON C-C

MARK	SIZE	LENGTH	BENDING DIAGRAM	
F12	1" dia	7'-0"		
F3	1/2" dia	Varies	Varies by 1"	
F12	3/4" dia	12'-0"	3'-10"	
F3	1/2" dia	11'-4"	3'-2"	2'-1 1/2"
F4	1/2" dia	Varies		
F10	3/4" dia	9'-6"		
F11	3/4" dia	10'-7"		



For Details of Superstructure, See
Drawgs. No 2393 and 2397.

DETAIL OF PIERS
BRIDGE OVER FOURCHE RIVER
NEAR HARVEY, ARK.
SCOTT COUNTY
ROUTE 25 SEC. 2

ARKANSAS STATE HIGHWAY COMMISSION
LITTLE ROCK, ARK.

Drawn By: *H.E.* Date: 9-4-30
Traced By: *H.E.* Date: 9-5-30
Checked By: _____ Date: _____
BRIDGE NO. 1594 DRAWING NO. 2892

M.R. Larson
BRIDGE ENGINEER

We black ink
in sections